

Transition criteria and phase space structures in a three degree of freedom system with dissipation

Jun Zhong^{1,*}  and Shane D Ross² 

¹ School of Engineering, Brown University, Providence, RI 02912, United States of America

² Aerospace and Ocean Engineering, Virginia Tech, Blacksburg, VA 24061, United States of America

E-mail: jun_zhong@brown.edu and sdross@vt.edu

Received 1 June 2021, revised 15 July 2021

Accepted for publication 21 July 2021

Published 19 August 2021



CrossMark

Abstract

Escape from a potential well through an index-1 saddle can be widely found in some important physical systems. Knowing the criteria and phase space geometry that govern escape events plays an important role in making use of such phenomenon, particularly when realistic frictional or dissipative forces are present. We aim to extend the study of the escape dynamics around the saddle from two degrees of freedom to three degrees of freedom, presenting both a methodology and phase space structures. Both the ideal conservative system and a perturbed, dissipative system are considered. We define the five-dimensional transition region, \mathcal{T}_h , as the set of initial conditions of a given initial energy h for which the trajectories will escape from one side of the saddle to another. Invariant manifold arguments demonstrate that in the six-dimensional phase space, the boundary of the transition region, $\partial\mathcal{T}_h$, is topologically a four-dimensional hyper-cylinder in the conservative system, and a four-dimensional hyper-sphere in the dissipative system. The transition region \mathcal{T}_h in the dissipative (conservative) system can be constructed by a solid three-dimensional ellipsoid (solid three-dimensional cylinder) in the three-dimensional configuration space, where at each point, there is a cone of velocity—the velocity directions leading to transition are given by cones, with velocity magnitude given by the initial energy and the direction by two spherical angles with given limits. To illustrate our analysis, we consider an example system which has two potential minima connected by an index 1 saddle.

*Author to whom any correspondence should be addressed.

Keywords: tube dynamics, invariant manifolds, transition dynamics, escape dynamics, transition tubes, transition ellipsoid, cone of velocity

(Some figures may appear in colour only in the online journal)

1. Introduction

From the perspective of multi-degree of freedom mechanical systems, transition events can be interpreted as the escape from potential wells. They are widely found in a number of important physical systems, such as snap-through buckling of curved structures [1–4], ship motion and capsizing [5, 6], chemical reactions [7, 8], and celestial mechanics [9, 10]. Good understanding of the dynamical structures and transition criteria can promote engineering design. Due to the importance of accurately predicting the transition events, several studies have been conducted, presenting both computational algorithms and phase space structures.

For conservative systems with higher degrees of freedom, the transition boundary for all possible escape trajectories is known to be the stable and unstable invariant manifolds of a normally hyperbolic invariant manifold (NHIM) [11] of a given energy. Recently, it was found that the corresponding transition boundary for dissipative systems is the stable invariant manifolds of an index-1 saddle connecting the potential wells [12, 13]. Specifically, for an intermediate case of two degree of freedom, the NHIM is a collection of periodic orbits around the index-1 saddle, each periodic orbit corresponding to a given energy [5, 14–16]. The geometry of corresponding stable invariant manifolds of the NHIM and the index-1 saddle are pieces of tubes (or cylinders) [5, 10, 17] and ellipsoids [12, 13, 18] in the conservative and dissipative systems, respectively, sometimes referred to as transition tubes and transition ellipsoids in *tube dynamics* [19–21]. Recently, the theory of transition tubes in two degrees of freedom was experimentally verified [22]. The transition boundary or the invariant manifold of a given energy separate two types of trajectories: transit orbits that escape from one potential well to another have initial conditions inside of the boundary, while non-transit orbits (NT) that evolve within the potential well have initial conditions outside of the boundary.

Since the transition boundary is given by stable invariant manifolds associated to the equilibrium point, one can use various approaches to compute those invariant manifolds. For conservative systems, one can first compute the center manifold (a NHIM) associated with the equilibrium point and then globalize the corresponding stable invariant manifolds associated to the center manifold [14], where globalizing means to ‘grow’ from the local ‘seed’ manifolds. For dissipative systems, there is no center manifold, but one can determine the local stable invariant manifold of the linearized system of the equilibrium point itself and then globalize the local invariant manifolds [23–25]. From the perspective of invariant manifold theory, some standard methods have been proposed to compute the transition boundary in both the conservative [14] and dissipative systems [13]. Note that since the invariant manifolds for the conservative and dissipative systems are mathematically different, generally the algorithms proposed for the conservative systems cannot work for the dissipative systems and vice versa. Some methods which do not rely on any information of the invariant manifolds were also developed which work for both conservative and dissipative systems, such as Lagrangian descriptor [26, 27], bisection method [21], isolating blocks [28, 29], to name but a few. Other computational algorithms can also be found in [20, 30–36]. Compared to the well understood escape dynamics in conservative systems with higher degrees of freedom [17, 37, 38], we have little understanding on higher degree of freedom systems with dissipation. Here we aim to extend the study on the linearized dynamics in two degree of freedom systems [12] to three degree of freedom systems in the presence of dissipative forces.

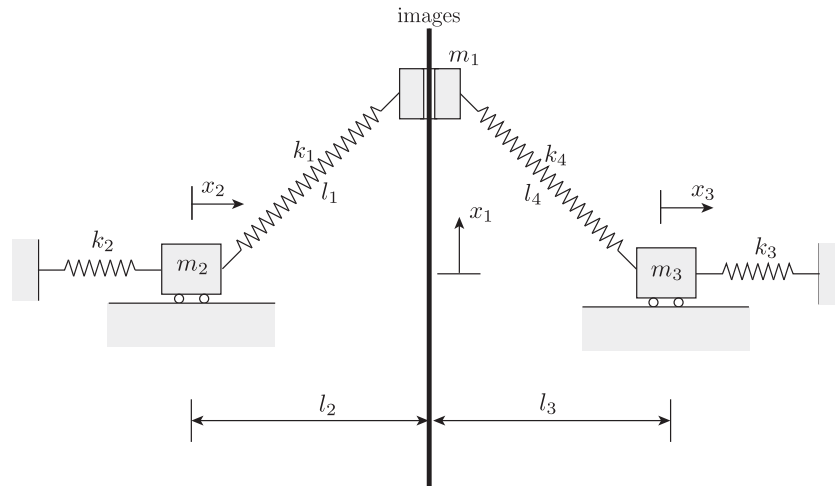


Figure 1. Schematic of the three-degree-of-freedom spring–mass system. One of the equilibrium configurations is shown, where $x_{2e} = x_{3e} = 0$, and $x_{1e} > 0$.

In the current study, we present a construction, building off of Conley [39], to establish the criteria for initial conditions leading to transitions in a three degree of freedom dissipative system. We consider an exemplar canonical Hamiltonian system with three degrees of freedom which admits an index-1 saddle point, both with and without linear dissipation. This system, which has two potential minima connected by an index-1 saddle, is chosen for its simplicity to illustrate our analysis. It resembles a chemical isomerization system with two conformations, a three degree of freedom generalization of those in, e.g., [40–42]. Application to other examples of interest is planned for future work. By virtue of appropriate theorems—the theorem of the local stable and unstable manifold [43–45] in the dissipative case, and a theorem of Moser [46, 47] in the conservative case—all the qualitative results from the local linearized behavior carry over to the full nonlinear equations.

The paper is organized as follows. In section 2, we derive the equations of motion in both the Lagrangian system and Hamiltonian system. The analysis of the linearized dynamics for the conservative and dissipative systems are given in sections 3 and 4, respectively. The corresponding analytical solutions and topological phase space structures that govern the transition are presented. Finally, in section 5, we give some discussions, summarize the current work, and discuss the possible future work.

2. Equations of motion

Consider a planar three degree of freedom spring–mass system as shown in figure 1. Three masses, denoted by $m_i (i = 1, 2, 3)$, are connected by four springs with stiffnesses denoted by $k_i (i = 1, 2, 3, 4)$. Constrained by a straight bar, m_1 can only slide along the vertical direction, while m_2 and m_3 can only move horizontally due to the constraint by the horizontal ground. Gravity is neglected.

When the system is in a stable equilibrium state, all the springs are neither compressed nor stretched. The equilibrium length of the spring connecting m_1 and m_2 is l_1 and the equilibrium length of the spring connecting m_1 and m_3 is l_4 . The horizontal distances of m_2 and m_3 to the bar at stable equilibrium are denoted by l_2 and l_3 where $l_1 > l_2$ and $l_4 > l_3$.

Note that the lengths l_i are not independent and satisfy the geometric relation $l_1^2 - l_2^2 = l_4^2 - l_3^2$. The generalized coordinates (x_1, x_2, x_3) are established to describe the position of the masses, where the origin (the zero) of the x_1 coordinate is at the same height of m_2 and m_3 . Note that by symmetry, there is a stable equilibrium with $x_1 > 0$ and a mirror image stable equilibrium configuration with $x_1 < 0$. The origin (the zero) of the x_2 and x_3 coordinates is chosen to be at the stable configurations and both x_2 and x_3 increase to the right, as shown in figure 1. Note that there is an unstable equilibrium configuration where the masses are collinear, that is, $x_1 = 0$.

The equations of motion are established as follows. We initially derive the mathematical model from a Lagrangian point of view. The kinetic energy for the system is given by,

$$\mathcal{T}(\dot{x}_1, \dot{x}_2, \dot{x}_3) = \frac{1}{2} (m_1 \dot{x}_1^2 + m_2 \dot{x}_2^2 + m_3 \dot{x}_3^2), \tag{1}$$

where the dot over a variable denotes the derivative with respect to time. The potential energy is,

$$\mathcal{V}(x_1, x_2, x_3) = \frac{1}{2} (k_1 \Delta l_1^2 + k_2 x_2^2 + k_3 x_3^2 + k_4 \Delta l_4^2), \tag{2}$$

where Δl_1 and Δl_4 are the changes of the length for spring 1 and spring 4, respectively, given by,

$$\Delta l_1 = \sqrt{(l_2 - x_2)^2 + x_1^2} - l_1, \quad \Delta l_4 = \sqrt{(l_3 + x_3)^2 + x_1^2} - l_4. \tag{3}$$

After obtaining the kinetic energy and potential energy, the Lagrange function \mathcal{L} can be defined by,

$$\mathcal{L}(x_1, x_2, x_3, \dot{x}_1, \dot{x}_2, \dot{x}_3) = \mathcal{T}(\dot{x}_1, \dot{x}_2, \dot{x}_3) - \mathcal{V}(x_1, x_2, x_3), \tag{4}$$

from which one can obtain the Euler–Lagrange equations,

$$\frac{d}{dt} \frac{\partial \mathcal{L}}{\partial \dot{q}_i} - \frac{\partial \mathcal{L}}{\partial q_i} = Q_i, \quad i = 1, 2, 3, \tag{5}$$

where q_i are the generalized coordinates, and Q_i are the non-conservative generalized forces. In the current problem, we consider a small linear viscous damping, proportional to the magnitude of the inertial velocity, i.e., $Q_i = c_i \dot{q}_i$, where $c_i (i = 1, 2, 3)$ are the coefficients of the viscous damping. From the Euler–Lagrange equation in (5), the equations of motion can be finalized as,

$$\begin{aligned} m_1 \ddot{x}_1 + c_1 \dot{x}_1 + \frac{k_1 \Delta l_1}{\Delta l_1 + l_1} x_1 + \frac{k_4 \Delta l_4}{\Delta l_4 + l_4} x_1 &= 0, \\ m_2 \ddot{x}_2 + c_2 \dot{x}_2 + k_2 x_2 + \frac{k_1 \Delta l_1}{\Delta l_1 + l_1} (x_2 - l_2) &= 0, \\ m_3 \ddot{x}_3 + c_3 \dot{x}_3 + k_3 x_3 + \frac{k_4 \Delta l_4}{\Delta l_4 + l_4} (x_3 + l_3) &= 0. \end{aligned} \tag{6}$$

After establishing the Lagrangian system, we can transform it to a Hamiltonian system via the Legendre transformation,

$$p_i = \frac{\partial \mathcal{L}}{\partial \dot{q}_i}, \quad \mathcal{H}(q_i, p_i) = \sum_{i=1}^n p_i \dot{q}_i - \mathcal{L}(q_i, p_i). \tag{7}$$

Here p_i is the generalized momentum conjugate to the generalized coordinate q_i , and \mathcal{H} is the Hamiltonian function. In the spring–mass system considered here, the Legendre transformation is given by,

$$p_1 = m_1\dot{x}_1, \quad p_2 = m_2\dot{x}_2, \quad p_3 = m_3\dot{x}_3, \quad (8)$$

and the Hamiltonian function becomes,

$$\mathcal{H} = \mathcal{T} + \mathcal{V}, \quad (9)$$

which is the total energy, the sum of kinetic and potential energies, where the kinetic energy is written in terms of the generalized momenta,

$$\mathcal{T} = \frac{1}{2} \left[\left(\frac{p_1}{m_1} \right)^2 + \left(\frac{p_2}{m_2} \right)^2 + \left(\frac{p_3}{m_3} \right)^2 \right]. \quad (10)$$

The Hamiltonian equations with damping [48] are given by,

$$\dot{q}_i = \frac{\partial \mathcal{H}}{\partial p_i}, \quad \dot{p}_i = -\frac{\partial \mathcal{H}}{\partial q_i} + Q_i. \quad (11)$$

The detailed form of the Hamiltonian equations are,

$$\begin{aligned} \dot{x}_1 &= p_1/m_1, & \dot{x}_2 &= p_2/m_2, & \dot{x}_3 &= p_3/m_3, \\ \dot{p}_1 &= -\frac{k_1\Delta l_1}{\Delta l_1 + l_1}x_1 - \frac{k_4\Delta l_4}{\Delta l_4 + l_4}x_1 - c_1p_1/m_1, \\ \dot{p}_2 &= -k_2x_2 - \frac{k_1\Delta l_1}{\Delta l_1 + l_1}(x_2 - l_2) - c_2p_2/m_2, \\ \dot{p}_3 &= -k_3x_3 - \frac{k_4\Delta l_4}{\Delta l_4 + l_4}(x_3 + l_3) - c_3p_3/m_3. \end{aligned} \quad (12)$$

In the current analysis, the parameters for the spring–mass system are taken as,

$$\begin{aligned} m_1 = m_2 = m_3 &= 0.1 \text{ kg}, & c_1 = c_2 = c_3 &= 100 \text{ Ns m}^{-1}, & k_1 = k_2 &= 100 \text{ N m}^{-1}, \\ k_3 = k_4 &= 150 \text{ N m}^{-1}, & l_1 &= 0.8 \text{ m}, & l_2 &= 0.5 \text{ m}, & l_3 = 0.6 \text{ m}, & l_4 = 0.5\sqrt{3} \text{ m}. \end{aligned} \quad (13)$$

For the given parameters, the system has three physically possible equilibrium points, two stable wells and one index-1 saddle, with the following equilibrium configuration locations,

$$(x_{1e}, x_{2e}, x_{3e}) = \begin{cases} \left(\pm\sqrt{l_1^2 - l_2^2}, 0, 0 \right), & \text{for the stable wells,} \\ \left(0, \frac{k_1(l_2 - l_1)}{k_1 + k_3}, \frac{k_4(l_4 - l_3)}{k_3 + k_4} \right), & \text{for the index-1 saddle.} \end{cases} \quad (14)$$

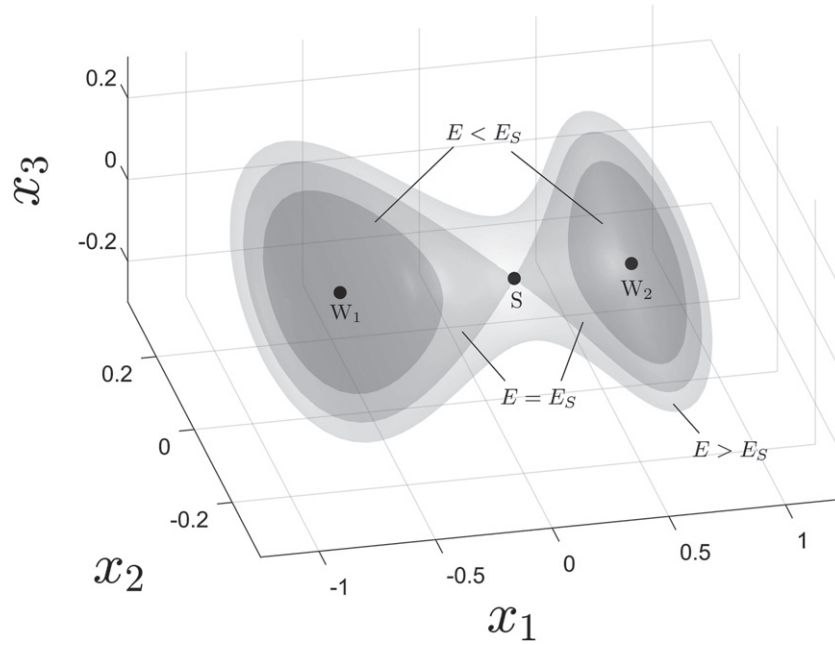


Figure 2. Three-dimensional contour of potential energy underlying the Hamiltonian function. Here W_1 and W_2 are the stable wells, while S is the index-1 saddle. Three energy contours for $E < E_S$, $E = E_S$, and $E > E_S$ are given for shown for three different energy cases.

For the parameters given in (13), three equilibria are shown in figure 2, where W_1 and W_2 are within the two stable wells, while S denotes the index-1 saddle. Denoting the potential energy at the saddle by E_S , one can notice it is the *critical energy* that allows the transition motion between the potential wells. The critical energy surface divides the motion into two energy cases. When the total energy is smaller than the critical energy, i.e., $E < E_S$, the motion is bounded within the potential wells, while when the total energy is bigger than the critical energy, i.e. $E > E_S$, the energy surface has a bottleneck that allows possible motion between potential wells. Three energy surface for $E < E_S$, $E = E_S$, and $E > E_S$ are also shown in figure 2.

2.1. Linearization around the saddle

In the current study, we only focus on the local behavior around the index-1 saddle. Linearizing the equations of motion in (12) about the saddle, we use positions and momenta, $(X_1, X_2, X_3, p_{X_1}, p_{X_2}, p_{X_3}) = (x_1, x_2, x_3, p_1, p_2, p_3) - (x_{1e}, x_{2e}, x_{3e}, 0, 0, 0)$, and obtain the linearized equations as,

$$\dot{X}_i = p_{X_i}/m_i, \quad \dot{p}_{X_i} = a_i X_i - c_i p_{X_i}/m_i, \quad i = 1, 2, 3. \tag{15}$$

By using $x_{1e} = 0$, as is the case for the index-1 saddle point, it is straightforward to obtain the following coefficients,

$$\begin{aligned} a_1 &= \frac{k_1 k_2 (l_1 - l_2)}{k_1 l_1 + k_2 l_2} + \frac{k_3 k_4 (l_4 - l_3)}{k_3 l_3 + k_4 l_4} > 0, \\ a_2 &= -(k_1 + k_2) < 0, \\ a_3 &= -(k_3 + k_4) < 0. \end{aligned} \tag{16}$$

For easier derivation, we introduce scaled parameters, $P_{X_i} = p_{X_i}/m_i$, $A_i = a_i/m_i$, and $C_i = c_i/m_i$, $i = 1, 2, 3$. The equations of motion can be rewritten in a simpler form,

$$\dot{X}_i = P_{X_i}, \quad \dot{P}_{X_i} = A_i X_i - C_i P_{X_i}, \quad i = 1, 2, 3. \tag{17}$$

With the column vector $X = (X_1, X_2, X_3, P_{X_1}, P_{X_2}, P_{X_3})^T$, we can rewrite (17) in a matrix form,

$$\dot{X} = MX + DX, \tag{18}$$

where M and D represent the conservative and dissipative parts of the dynamics, respectively,

$$M = \begin{pmatrix} 0 & 0 & 0 & 1 & 0 & 0 \\ 0 & 0 & 0 & 0 & 1 & 0 \\ 0 & 0 & 0 & 0 & 0 & 1 \\ A_1 & 0 & 0 & 0 & 0 & 0 \\ 0 & A_2 & 0 & 0 & 0 & 0 \\ 0 & 0 & A_3 & 0 & 0 & 0 \end{pmatrix}, \quad D = \begin{pmatrix} 0 & 0 & 0 & 0 & 0 & 0 \\ 0 & 0 & 0 & 0 & 0 & 0 \\ 0 & 0 & 0 & 0 & 0 & 0 \\ 0 & 0 & 0 & -C_1 & 0 & 0 \\ 0 & 0 & 0 & 0 & -C_2 & 0 \\ 0 & 0 & 0 & 0 & 0 & -C_3 \end{pmatrix}. \tag{19}$$

The corresponding quadratic Hamiltonian function for the linearized system is given by,

$$\mathcal{H} = \frac{1}{2} (P_{X_1}^2 + P_{X_2}^2 + P_{X_3}^2) - \frac{1}{2} (A_1 X_1^2 + A_2 X_2^2 + A_3 X_3^2). \tag{20}$$

3. Conservative system

3.1. Analytical solutions near the equilibria

In this section, we analyze the linearized dynamics around the saddle in the conservative system with $C_i = 0$ ($i = 1, 2, 3$). The characteristic polynomial is,

$$\begin{aligned} p(\beta) &= \beta^6 - (A_1 + A_2 + A_3) \beta^4 + (A_1 A_2 + A_1 A_3 + A_2 A_3) \beta^2 - A_1 A_2 A_3 \\ &= (\beta^2 - A_1) (\beta^2 - A_2) (\beta^2 - A_3), \end{aligned} \tag{21}$$

where β denotes the eigenvalue. Notice that $A_1 > 0$, $A_2 < 0$, and $A_3 < 0$. In this case, the linearized system has one pair of real eigenvalues with opposite sign and two pairs of pure complex conjugate eigenvalues, denoted by $\beta_{1,2} = \pm\lambda$, $\beta_{3,4} = \pm i\omega_2$, and $\beta_{5,6} = \pm i\omega_3$, where $\lambda = \sqrt{A_1}$, $\omega_2 = \sqrt{-A_2}$, and $\omega_3 = \sqrt{-A_3}$ are positive real constants. It shows that the equilibrium point is a saddle \times center \times center. After obtaining the eigenvalues, it is natural to obtain the corresponding eigenvectors which are denoted by $u_{\pm\lambda}$, $u_{\omega_2} \pm i v_{\omega_2}$, and $u_{\omega_3} \pm i v_{\omega_3}$, respectively. Introduce a linear change of variables given by,

$$X = CQ, \tag{22}$$

where $Q = (q_1, q_2, q_3, p_1, p_2, p_3)^T$. The columns of the 6×6 matrix C are given by the eigenvectors with the following form,

$$C = (u_\lambda, u_{\omega_2}, u_{\omega_3}, u_{-\lambda}, v_{\omega_2}, v_{\omega_3}) = \begin{pmatrix} 1 & 0 & 0 & -1 & 0 & 0 \\ 0 & 1 & 0 & 0 & 0 & 0 \\ 0 & 0 & 1 & 0 & 0 & 0 \\ \lambda & 0 & 0 & \lambda & 0 & 0 \\ 0 & 0 & 0 & 0 & \omega_2 & 0 \\ 0 & 0 & 0 & 0 & 0 & \omega_3 \end{pmatrix}. \quad (23)$$

From (23), we find the following relations,

$$C^T J C = \begin{pmatrix} 0 & B \\ -B & 0 \end{pmatrix}, \quad B = \begin{pmatrix} 2\lambda & 0 & 0 \\ 0 & \omega_2 & 0 \\ 0 & 0 & \omega_3 \end{pmatrix}. \quad (24)$$

To obtain a symplectic change of variables [14, 49], we need $C^T J C = J$, where J is the 6×6 canonical symplectic matrix defined by,

$$J = \begin{pmatrix} 0 & I_3 \\ -I_3 & 0 \end{pmatrix}, \quad (25)$$

and I_3 is the 3×3 identity matrix. Thus, we rescale the columns of C by the factors $s_1 = \sqrt{2\lambda}$, $s_2 = \sqrt{\omega_2}$, and $s_3 = \sqrt{\omega_3}$ so that the final form of the symplectic matrix C can be obtained as,

$$C = \begin{pmatrix} \frac{1}{\sqrt{2\lambda}} & 0 & 0 & -\frac{1}{\sqrt{2\lambda}} & 0 & 0 \\ 0 & \frac{1}{\sqrt{\omega_2}} & 0 & 0 & 0 & 0 \\ 0 & 0 & \frac{1}{\sqrt{\omega_3}} & 0 & 0 & 0 \\ \sqrt{\frac{\lambda}{2}} & 0 & 0 & \sqrt{\frac{\lambda}{2}} & 0 & 0 \\ 0 & 0 & 0 & 0 & \sqrt{\omega_2} & 0 \\ 0 & 0 & 0 & 0 & 0 & \sqrt{\omega_3} \end{pmatrix}, \quad (26)$$

which casts the equations of motion into their symplectic eigenbasis normal form,

$$\begin{aligned} \dot{q}_1 &= \lambda q_1, & \dot{p}_1 &= -\lambda p_1, \\ \dot{q}_2 &= \omega_2 p_2, & \dot{p}_2 &= -\omega_2 q_2, \\ \dot{q}_3 &= \omega_3 p_3, & \dot{p}_3 &= -\omega_3 q_3, \end{aligned} \quad (27)$$

with quadratic Hamiltonian function given by,

$$\mathcal{H}_2 = \lambda q_1 p_1 + \frac{1}{2} \omega_2 (q_2^2 + p_2^2) + \frac{1}{2} \omega_3 (q_3^2 + p_3^2). \quad (28)$$

The solutions of (27) can be conveniently written as,

$$\begin{aligned} q_1 &= q_1^0 e^{\lambda t}, & p_1 &= p_1^0 e^{-\lambda t}, \\ q_2 + i p_2 &= (q_2^0 + i p_2^0) e^{-i\omega_2 t}, \\ q_3 + i p_3 &= (q_3^0 + i p_3^0) e^{-i\omega_3 t}, \end{aligned} \quad (29)$$

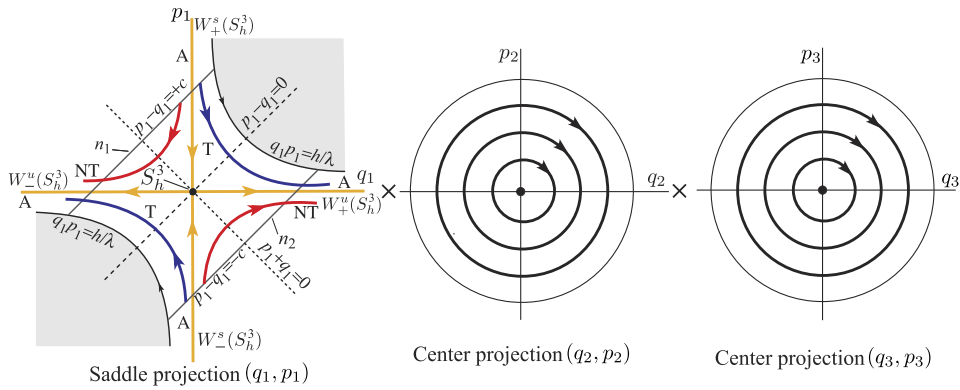


Figure 3. The flow in the equilibrium region has the form saddle \times center \times center. On the left is shown the projection onto the (p_1, q_1) -plane, the saddle projection. Shown are the bounded orbits (black dot at the center), the asymptotic orbits (labeled A), two transit orbits (T) and two non-transit orbits (NT).

where $Q_0 = (q_1^0, q_2^0, q_3^0, p_1^0, p_2^0, p_3^0)^T$ are the initial conditions. Specifically under the Hamiltonian system (27) one can find the following independent constants of motion,

$$f_1 = q_1 p_1, \quad f_2 = q_2^2 + p_2^2, \quad f_3 = q_3^2 + p_3^2, \quad (30)$$

one in each of the canonical projections (q_i, p_i) .

3.2. Boundary of transit and non-transit orbits

3.2.1. *The linearized phase space.* For positive h and c , the region \mathcal{R} , which is determined by

$$\mathcal{H}_2 = h, \quad \text{and} \quad |p_1 - q_1| \leq c, \quad (31)$$

is homeomorphic to the product of a four-sphere and an interval $I \subset \mathbb{R}, S^4 \times I$; namely, for each fixed value of $p_1 - q_1$ in the interval $I = [-c, c]$, we see that the equation $\mathcal{H}_2 = h$ determines a four-sphere,

$$\frac{\lambda}{4}(q_1 + p_1)^2 + \frac{\omega_2}{2}(q_2^2 + p_2^2) + \frac{\omega_3}{2}(q_3^2 + p_3^2) = h + \frac{\lambda}{4}(p_1 - q_1)^2. \quad (32)$$

The bounding four-sphere of \mathcal{R} for which $p_1 - q_1 = -c$ will be called n_1 , and that where $p_1 - q_1 = c, n_2$ (see figure 3).

We call the set of points on each bounding four-sphere where $p_1 + q_1 = 0$ the equator, and the sets where $p_1 + q_1 > 0$ or $p_1 + q_1 < 0$ will be called the northern and southern hemispheres, respectively.

3.2.2. *The linear flow in \mathcal{R} .* To analyze the flow in \mathcal{R} , one considers the projections on the (q_1, p_1) -plane and $(q_2, p_2) \times (q_3, p_3)$ -space, respectively. In the case of the (q_1, p_1) -plane, we see the standard picture of a saddle critical point. In the case of the $(q_2, p_2) \times (q_3, p_3)$ -space, we have a center manifold consisting of two uncoupled harmonic oscillators. Figure 3 schematically illustrates the flow. With regard to the first projection we see that \mathcal{R} itself projects to a set bounded on two sides by the hyperbola $q_1 p_1 = h/\lambda$ (corresponding to $q_2^2 + p_2^2 = q_3^2 + p_3^2 = 0$, see (28)) and on two other sides by the line segments $p_1 - q_1 = \pm c$, which correspond to the bounding four-spheres.

Since $q_1 p_1$, from (30), is an integral of the equations in \mathcal{R} , the projections of orbits in the (q_1, p_1) -plane move on the branches of the corresponding hyperbolas $q_1 p_1 = \text{constant}$, except in the case $q_1 p_1 = 0$, where $q_1 = 0$ or $p_1 = 0$. If $q_1 p_1 > 0$, the branches connect the bounding line segments $p_1 - q_1 = \pm c$, that is, from n_1 to n_2 or vice versa. If $q_1 p_1 < 0$, the branches have both end points on the same segment, that is, from n_1 to n_1 or n_2 to n_2 . A check of equation (27) shows that the orbits move as indicated by the arrows in figure 3.

To interpret figure 3 as a flow in \mathcal{R} , notice that each point in the (q_1, p_1) -plane projection corresponds to a three-sphere S^3 in \mathcal{R} given by,

$$\frac{\omega_2}{2}(q_2^2 + p_2^2) + \frac{\omega_3}{2}(q_3^2 + p_3^2) = h - \lambda q_1 p_1. \tag{33}$$

Of course, for points on the bounding hyperbolic segments ($q_1 p_1 = h/\lambda$), the three-sphere collapses to a point. Thus, the segments of the lines $p_1 - q_1 = \pm c$ in the projection correspond to the four-spheres bounding \mathcal{R} . This is because each corresponds to a three-sphere crossed with an interval where the two end three-spheres are pinched to a point.

We distinguish nine classes of orbits grouped into the following four categories:

- (a) The point $q_1 = p_1 = 0$ corresponds to an invariant three-sphere S_h^3 of **bounded orbits** in \mathcal{R} , containing both **periodic** and, more generally, **quasi-periodic** orbits (QPs) (see [50]). This three-sphere is given by,

$$\frac{\omega_2}{2}(q_2^2 + p_2^2) + \frac{\omega_3}{2}(q_3^2 + p_3^2) = h, \quad q_1 = p_1 = 0. \tag{34}$$

It is an example of a NHIM at a fixed energy h (see [11]). Roughly, this means that the stretching and contraction rates under the linearized dynamics transverse to the three-sphere dominate those tangent to the three-sphere. This is clear for this example since the dynamics normal to the three-sphere are described by the exponential contraction and expansion of the saddle point dynamics. The three-sphere acts as a ‘big saddle point’. See the black dot labeled S_h^3 at the center of the (q_1, p_1) -plane on the left side of figure 3.

- (b) The four half open segments on the axes, $q_1 p_1 = 0$, correspond to four cylinders of orbits asymptotic to this invariant three-sphere S_h^3 either as time increases ($q_1 = 0$) or as time decreases ($p_1 = 0$). These are called **asymptotic** orbits and they form the stable and the unstable manifolds, respectively, of the three-sphere of bounded orbits at this energy h , S_h^3 . The stable manifold branches, $W_{\pm}^s(S_h^3)$, are given by,

$$\frac{\omega_2}{2}(q_2^2 + p_2^2) + \frac{\omega_3}{2}(q_3^2 + p_3^2) = h, \quad q_1 = 0, \tag{35}$$

where $W_+^s(S_h^3)$ is the branch with $p_1 > 0$ and $W_-^s(S_h^3)$ is the branch with $p_1 < 0$. The unstable manifold branches, $W_{\pm}^u(S_h^3)$, are given by,

$$\frac{\omega_2}{2}(q_2^2 + p_2^2) + \frac{\omega_3}{2}(q_3^2 + p_3^2) = h, \quad p_1 = 0, \tag{36}$$

where $W_+^u(S_h^3)$ is the branch with $q_1 > 0$ and $W_-^u(S_h^3)$ is the branch with $q_1 < 0$. See the four orbits labeled A for asymptotic in figure 3.

- (c) The hyperbola segments determined by $q_1 p_1 = \text{constant} > 0$ correspond to two hyper-cylinders of orbits which cross \mathcal{R} from one bounding four-sphere to the other, meeting both in the same hemisphere; the northern hemisphere if they go from $n_1(p_1 - q_1 = +c)$

to $n_2(p_1 - q_1 = -c)$, and the southern hemisphere in the other case. Since these orbits transit from one potential well to another, or one side of the index-1 saddle point to the other, we call them **transit** orbits. See the two orbits labeled T in figure 3.

- (d) Finally the hyperbola segments determined by $q_1 p_1 = \text{constant} < 0$ correspond to two hyper-cylinders of orbits in \mathcal{R} each of which runs from one hemisphere to the other hemisphere on the same bounding four-sphere. Thus if $p_1 > 0$, the four-sphere is n_1 ($p_1 - q_1 = +c$) and orbits run from the northern hemisphere ($p_1 + q_1 > 0$) to the southern hemisphere ($p_1 + q_1 < 0$) while the converse holds if $p_1 < 0$, where the four-sphere is n_2 . Since these orbits return to the same potential well, we call them **non-transit** orbits. See the two orbits labeled NT in figure 3.

3.2.3. Invariant manifolds as separatrices. The key observation here is that the asymptotic orbits form four-dimensional stable and unstable invariant manifold hyper-cylinders or ‘tubes’ (with topology $S^3 \times \mathbb{R}$), which are asymptotic to the invariant three-sphere S_h^3 in a five-dimensional energy surface and which separate two distinct types of motion: transit orbits and NT orbits. The transit orbits, passing from one potential energy well to another, are those located inside the four-dimensional manifold tube. The NT orbits, which bounce back to their potential energy well of origin, are those outside the tube.

In fact, it can be shown that for a value of the Hamiltonian energy just above that of the index-1 saddle point, the nonlinear dynamics in the equilibrium region \mathcal{R} is qualitatively the same as the linearized picture that we have shown above.

For example, the NHIM for the nonlinear system which corresponds to the three-sphere (34) for the linearized system is given by

$$\mathcal{M}_h^3 = \left\{ (q, p) \mid \frac{\omega_2}{2} (q_2^2 + p_2^2) + \frac{\omega_3}{2} (q_3^2 + p_3^2) + f(q_2, p_2, q_3, p_3) = h, q_1 = p_1 = 0 \right\}, \tag{37}$$

where f is at least of third-order. Here, $(q_1, p_1, q_2, p_2, q_3, p_3)$ are normal form coordinates and are related to the linearized coordinates via a near-identity transformation.

In a small neighborhood of the index-1 saddle equilibrium point, since the nonlinear terms are much smaller than the linear terms, the three-sphere for the linear problem becomes a deformed sphere for the nonlinear problem. Moreover, since NHIMs persist under perturbation, this deformed sphere \mathcal{M}_h^3 still has stable and unstable manifolds which are given by,

$$\begin{aligned} W_{\pm}^s(\mathcal{M}_h^3) &= \left\{ (q, p) \mid \frac{\omega_2}{2} (q_2^2 + p_2^2) + \frac{\omega_3}{2} (q_3^2 + p_3^2) + f(q_2, p_2, q_3, p_3) = h, q_1 = 0 \right\} \\ W_{\pm}^u(\mathcal{M}_h^3) &= \left\{ (q, p) \mid \frac{\omega_2}{2} (q_2^2 + p_2^2) + \frac{\omega_3}{2} (q_3^2 + p_3^2) + f(q_2, p_2, q_3, p_3) = h, p_1 = 0 \right\}. \end{aligned} \tag{38}$$

Notice the similarity between the formulas above and those for the linearized problem, (35) and (36). See [51–53] for details. This geometric insight will be used below to guide our numerical explorations in constructing transit orbits.

3.3. Trajectories in the position space

After considering the flow in the eigenspace, we now examine the appearance of the orbits in the position space. It should be mentioned that in position space, all possible motions are confined within the energy manifold, the boundary of which is a zero velocity or zero momentum

surface [14, 54] (corresponding to $P_{X_1} = P_{X_2} = P_{X_3} = 0$), which can be obtained from (20) as,

$$A_1 X_1^2 + A_2 X_2^2 + A_3 X_3^2 = -2h. \tag{39}$$

Based on the solutions in (29) for the eigenspace in the conservative system, one can obtain the solutions in the phase space analytically as functions of time,

$$\begin{aligned} X_1 &= \frac{1}{\sqrt{2\lambda}} q_1^0 e^{\lambda t} - \frac{1}{\sqrt{2\lambda}} p_1^0 e^{-\lambda t}, & X_j &= \frac{1}{\sqrt{\omega_j}} (q_j^0 \cos \omega_j t + p_j^0 \sin \omega_j t), \\ P_{X_1} &= \sqrt{\frac{\lambda}{2}} q_1^0 e^{\lambda t} + \sqrt{\frac{\lambda}{2}} p_1^0 e^{-\lambda t}, & P_{X_j} &= \sqrt{\omega_j} (-q_j^0 \sin \omega_j t + p_j^0 \cos \omega_j t). \end{aligned} \tag{40}$$

Here and in the following, if not specifically pointed out, $j = 2, 3$.

Inspecting the above general solutions and examining the limiting cases of the X_1 coordinate as t goes to positive and negative infinity (X_1 acts as a ‘reaction coordinate’ [55, 56]), we can classify the same classes of orbits into the same four categories according to different combination of the signs of p_1^0 and q_1^0 :

- (a) If $q_1^0 = p_1^0 = 0$, the motion is on the center manifold (right two projections of figure 3), which could be periodic or quasi-periodic motion.
- (b) Orbits with $q_1^0 p_1^0 = 0$ are asymptotic orbits. They are asymptotic to the periodic orbit. Asymptotic orbits with either q_1^0 or $p_1^0 = 0$ project into a cylinder, as shown in figure 4, bounded by a surface defined by

$$\frac{(X_2^0)^2}{\left(\frac{\sqrt{2h}}{\omega_2}\right)^2} + \frac{(X_3^0)^2}{\left(\frac{\sqrt{2h}}{\omega_3}\right)^2} = 1. \tag{41}$$

- (c) Orbits with $q_1^0 p_1^0 > 0$ are transit orbits since when $q_1^0 > 0$ and $p_1^0 > 0$, the orbits cross the equilibrium region from $-\infty$ (bottom) to $+\infty$ (top) or vice versa.
- (d) Orbits with $q_1^0 p_1^0 < 0$ are NT orbits. When $q_1^0 < 0$ and $p_1^0 > 0$, the orbits starting from $-\infty$ approach to $-\infty$. When $q_1^0 > 0$ and $p_1^0 < 0$, the orbits starting from $+\infty$ approach to $+\infty$.

3.3.1. Tube of transition and cone of velocity. Defining the initial conditions in the phase space as $X_0 = (X_1^0, X_2^0, X_3^0, P_{X_1}^0, P_{X_2}^0, P_{X_3}^0)$, one can connect X_0 and Q_0 by the symplectic change of variables in (22), i.e., $X_0 = CQ_0$. As discussed in the previous section, the stable manifold tubes consisting of stable asymptotic orbits separate the transit orbits and NT orbits. For the stable asymptotic orbits, we have $q_1^0 = 0$. Thus, we have the following relations for stable asymptotic orbits,

$$\begin{aligned} q_1^0 &= 0, & q_2^0 &= \sqrt{\omega_2} X_2^0, & q_3^0 &= \sqrt{\omega_3} X_3^0, \\ p_1^0 &= -\sqrt{2\lambda} X_1^0, & p_2^0 &= \frac{P_{X_2}^0}{\sqrt{\omega_2}}, & p_3^0 &= \frac{P_{X_3}^0}{\sqrt{\omega_3}}. \end{aligned} \tag{42}$$

The substitution of the relations in (42) into the Hamiltonian normal form in (28) gives the initial conditions in the phase space for the stable asymptotic orbits,

$$\frac{(X_2^0)^2}{a_{X_2}^2} + \frac{(X_3^0)^2}{a_{X_3}^2} + \frac{(P_{X_2}^0)^2}{(\sqrt{2h})^2} + \frac{(P_{X_3}^0)^2}{(\sqrt{2h})^2} = 1, \quad \text{and} \quad P_{X_1}^0 = -\lambda X_1^0, \tag{43}$$

where $a_{X_2} = \sqrt{2h}/\omega_2$, $a_{X_3} = \sqrt{2h}/\omega_3$. Notice that the six phase space variables are not all independent. The four variables $(X_2, X_3, P_{X_2}, P_{X_3})$, according to the first equation in (43), topologically describe a three-sphere. The two variables (X_1, P_{X_1}) describe a line. We refer to the direct product of a three-sphere and a line segment as a hyper-cylinder (or colloquially as a tube). It is the transition boundary separating the transit and NT orbits starting at an initial energy h , which we will call $\partial\mathcal{T}_h$. As it is a tube, we refer to this four-dimensional object $\partial\mathcal{T}_h$ as the **transition tube** of energy h . Although the analytical form of the transition criteria have been derived in (43), it is impossible to plot the geometric structures in the six-dimensional phase space. In the following, we focus on discussing the transition criteria and geometry in the three-dimensional position space, as it is easier to interpret.

Since the last two terms related to the momenta at the left side of (43) should be non-negative, we have that the projection of $\partial\mathcal{T}_h$ onto configuration space satisfies,

$$(X_2^0/a_{X_2})^2 + (X_3^0/a_{X_3})^2 \leq 1. \tag{44}$$

The form in the position space appears as a solid tube, in the sense of $D^2 \times \mathbb{R}$ (where D^2 is the two-dimensional closed disc) with boundary of a cylinder $S^1 \times \mathbb{R}$. Here we refer to it as the **tube of transition**, and it is the three-degree-of-freedom counterpart of the strips of transition described by Conley [39] and Koon *et al* [14] for a two-degree-of-freedom Hamiltonian system. The tube of transition confines the existence of transit orbits of the given energy h ; transit orbits can only start with positions within the tube. Outside of the tube, and at the same energy h , the situation is simple. All trajectories starting there are NT orbits. It means the sign of $q_1^0 p_1^0$ in the eigenspace variables is always negative, independent of the direction of the velocity. For example, the signs in each component of the equilibrium region \mathcal{R} complementary to the tube can be determined by limiting behavior of X_1 for positive and negative infinite time. For example, in the left component the NT orbits stay on the left side for $t \rightarrow \pm\infty$, indicating $p_1^0 > 0$ and $q_1^0 < 0$. Similarly, in the right component we have $p_1^0 < 0$ and $q_1^0 > 0$.

For a specific position (X_1^0, X_2^0, X_3^0) inside the tube, the situation is more complicated since the initial position within the tube is only a necessary condition for a transit orbit and the signs of q_1^0 and p_1^0 are dependent on direction of the velocity. In the following we aim to derive another criteria in addition to the tube of transition for the transit orbits with the position inside the tube. We introduce R , θ , and ϕ to rewrite the three momenta as in spherical coordinates,

$$P_{X_1}^0 = R \sin \theta, \quad P_{X_2} = R \cos \theta \sin \phi, \quad P_{X_3} = R \cos \theta \cos \phi, \tag{45}$$

where R , the momentum magnitude, is given by,

$$R = 2h - [A_1(X_1^0)^2 + A_2(X_2^0)^2 + A_3(X_3^0)^2]. \tag{46}$$

From the relation $P_{X_1}^0 = -\lambda X_1^0 = R \sin \theta$, one can obtain the conditions on the angles,

$$\theta = \arcsin\left(-\frac{\lambda X_1^0}{R}\right), \quad \phi \in [0, 2\pi]. \tag{47}$$

As a result, the above relations together define a cone at the position (X_1^0, X_2^0, X_3^0) within the tube of transition. Here we refer to it as the **cone of velocity**, in analogy with the wedge of velocity discussed by Conley [39] (see also [12]). Notice the cone only exists inside of the tube of transition to ensure $R > 0$.

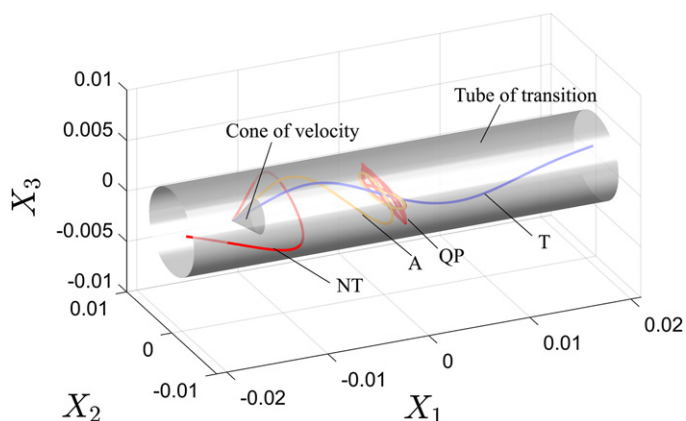


Figure 4. Transition criteria and position space geometry in the conservative system with a fixed positive energy, $\mathcal{H}_2 = h > 0$. The tube of transition gives the possible initial positions of the transit orbits which means the transit orbits must start from a position within the tube. Moreover, for each position inside of the tube of transition, there exists a corresponding cone of velocity giving the directions of the velocity inside of which transit orbits occur. The transit orbit must have the initial velocity interior to the cone of velocity. Four types of trajectories are given in the figure: quasi-periodic orbit (QP), asymptotic orbit (A), transit orbit (T), and NT. Notice that the transit orbit, NT orbit, and A all start from a position inside of the tube of transition. However, different initial velocity yields different type of orbits. The transit orbit and NT orbit have initial velocity inside and outside of the cone of velocity, while the A have initial velocity on the boundary of the cone.

Figure 4 gives the flow of the conservative system projected onto the position space. A tube of transition of a given energy is shown; that is, the projection of the position-based necessary condition. The orbits outside the tube are all NT orbits. Inside the tube, the cone of velocity acts as a secondary condition to guarantee the transition. It is the separatrix of transit and NT orbits at each point in the position-based tube of transition. The orbits with velocity inside of the cone are transit orbits, while those with velocity outside of the cone are NT orbits. Orbits with velocity on the boundary of the cone are the stable asymptotic orbits to the center manifold. In figure 4, the four types of orbits mentioned above are given.

One can notice from the infinite length of the tube along the X_1 direction that the transit orbits can start from a position infinitely far from the equilibrium point due to energy conservation. However, in practice, this is not observed since energy dissipation cannot be avoided in a realistic application. In the next section, we drop the ideal case of energy conservation and study the more practical case where energy dissipation is included and consider the geometry and criteria for transition in the dissipative system.

4. Dissipative system

4.1. Analytical solutions near the equilibria

In this section, we focus on the linearized dynamics around the index-1 saddle in the dissipative system. Using the same change of variables in (22), the equations of motion in the dissipative

system can be written as,

$$\begin{cases} \dot{q}_1 = \left(\lambda - \frac{C_1}{2}\right) q_1 - \frac{C_1}{2} p_1, \\ \dot{p}_1 = -\frac{C_1}{2} q_1 + \left(-\lambda - \frac{C_1}{2}\right) p_1, \end{cases} \tag{48a}$$

$$\begin{cases} \dot{q}_j = \omega_j p_j, \\ \dot{p}_j = -\omega_j q_j - C_j p_j. \end{cases} \tag{48b}$$

Note that the dynamics on the (q_1, p_1) , (q_2, p_2) , and (q_3, p_3) planes are uncoupled, which makes them easily solved analytically. The characteristic polynomial for each plane is given by,

$$\begin{aligned} p_1(\beta) &= \beta^2 + C_1\beta - \lambda^2, \\ p_j(\beta) &= \beta^2 + C_j\beta + \omega_j^2, \end{aligned} \tag{49}$$

with the following eigenvalues,

$$\begin{aligned} \beta_{1,2} &= \frac{-C_1 \pm \sqrt{C_1^2 + 4\lambda^2}}{2}, \\ \beta_{2j-1,2j} &= -\delta_j \pm i\omega_{d_j}, \end{aligned} \tag{50}$$

where,

$$\delta_j = C_j/2, \quad \omega_{d_j} = \omega_j \sqrt{1 - \xi_{d_j}^2}, \quad \xi_{d_j} = \delta_j/\omega_j. \tag{51}$$

Thus, the general solutions are given by,

$$\begin{cases} q_1 = k_1 e^{\beta_1 t} + k_2 e^{\beta_2 t}, \\ p_1 = k_3 e^{\beta_1 t} + k_4 e^{\beta_2 t}, \end{cases} \tag{52a}$$

$$\begin{cases} q_j = k_{2j+1} e^{-\delta_j t} \cos \omega_{d_j} t + k_{2j+2} e^{-\delta_j t} \sin \omega_{d_j} t, \\ p_j = \frac{k_{2j+1}}{\omega_j} e^{-\delta_j t} (-\delta_j \cos \omega_{d_j} t - \omega_{d_j} \sin \omega_{d_j} t) + \frac{k_{2j+2}}{\omega_j} e^{-\delta_j t} (\omega_{d_j} \cos \omega_{d_j} t - \delta_j \sin \omega_{d_j} t). \end{cases} \tag{52b}$$

where,

$$\begin{aligned} k_1 &= \frac{q_1^0 (2\lambda + \sqrt{C_1^2 + 4\lambda^2}) - C_1 p_1^0}{2\sqrt{C_1^2 + 4\lambda^2}}, & k_2 &= \frac{q_1^0 (-2\lambda + \sqrt{C_1^2 + 4\lambda^2}) + C_1 p_1^0}{2\sqrt{C_1^2 + 4\lambda^2}}, \\ k_3 &= \frac{p_1^0 (-2\lambda + \sqrt{C_1^2 + 4\lambda^2}) - C_1 q_1^0}{2\sqrt{C_1^2 + 4\lambda^2}}, & k_4 &= \frac{p_1^0 (2\lambda + \sqrt{C_1^2 + 4\lambda^2}) + C_1 q_1^0}{2\sqrt{C_1^2 + 4\lambda^2}}, \\ k_{2j+1} &= q_j^0, & k_{2j+2} &= \frac{p_j^0 \omega_j + q_j^0 \delta_j}{\omega_{d_j}}. \end{aligned}$$

Taking the total derivative of the Hamiltonian function in (28) and applying the equations of motion in (48), we have,

$$\dot{\mathcal{H}}_2 = -\frac{1}{2}C_1\lambda(q_1 + p_1)^2 - C_2\omega_2p_2^2 - C_3\omega_3p_3^2 \leq 0, \tag{53}$$

which means the Hamiltonian or the total energy is always decreasing (more precisely, non-increasing) due to the presence of damping.

4.2. *Boundary of transit and non-transit orbits*

4.2.1. *The linear flow in \mathcal{R} .* Analogous to the discussion in the conservative system, the same equilibrium region \mathcal{R} is selected to show the projections in the (q_1, p_1) -plane, (q_2, p_2) -plane, and (q_3, p_3) -plane. We note from the solution in (52) that in contrast to the saddle \times center \times center projections in the conservative system, the dissipative system presents saddle \times focus \times focus projections. The two focus projections are damped oscillators with frequencies given by $\omega_{d_j} = \omega_j(1 - \xi_{d_j}^2)^{1/2}$, $j = 2, 3$. Observing the limiting cases of X_1 as $t \rightarrow \pm\infty$, we can classify the orbits into the following four categories:

- (a) The origin in the saddle projection, e.g., $(q_1, p_1) = (0, 0)$, corresponds to a **focus-type A** which only has motion in the two focus projections, e.g., (q_2, p_2) -plane and (q_3, p_3) -plane. See the dot at the origin of the (q_1, p_1) -plane in figure 5. Due to the effect of damping, the periodic orbit in the conservative system does not exist.
- (b) The four half open segments on the lines defined by $q_1 = C_1p_1/(2\lambda \pm \sqrt{C_1^2 + 4\lambda^2})$ are **saddle-type asymptotic** orbits (SAs). See the four orbits labeled A in figure 5. Compared to the asymptotic orbits in the conservative system, the SAs tilted counterclockwise with a certain angle which is dependent on the magnitude of the damping. Moreover, the SAs are asymptotic to the equilibrium point which is different from those in the conservative cases asymptotic to the periodic orbits.
- (c) The segments which cross \mathcal{R} from one bounding line to another, i.e., from $p_1 - q_1 = +c$ to $p_1 - q_1 = -c$ in the northern hemisphere, and vice versa in the southern hemisphere, correspond to **transit orbits**. See the orbits labeled T of figure 5. Notice that segments giving the initial conditions of transit orbits in the dissipative system are shorter than those in the conservative system which means the damping reduces the amount of transit orbits.
- (d) Finally the segments which run from one hemisphere to the other hemisphere on the same boundary, namely which start from $p_1 - q_1 = \pm c$ and return to the same bounding line, correspond to **non-transit** orbits. See the two orbits labeled NT of figure 5. In the dissipative system, the segments for the initial conditions of the NT orbits are longer than those in the conservative system.

4.2.2. *Stable invariant manifold of the saddle point as separatrices.* We find that the asymptotic orbits are the stable and unstable invariant manifolds of the equilibrium point itself (rather than a NHIM restricted to an energy surface). The stable invariant manifold of a given energy (that is, the stable invariant manifold intersected with an energy surface) appears as a hyper-ellipsoid (topologically a 4-sphere) which separates the initial conditions of orbits with distinct types of motion: transit (T) orbits and non-transit (NT) orbits. Transit orbits passing from one potential well to another must have initial conditions inside the ellipsoid, while NT orbits staying within the potential well where they come from have initial conditions outside the ellipsoid.

4.3. Trajectories in the position space

After analyzing the trajectories in the eigenspace, we pay attention to the situation in the position space. From the analytical solutions in (52) for the eigenspace and the change of variables in (22), we can obtain the general solutions in the position space as,

$$\begin{aligned} X_1 &= \frac{1}{\sqrt{2\lambda}} (\bar{k}_1 e^{\beta_1 t} + \bar{k}_2 e^{\beta_2 t}), \\ X_j &= \frac{1}{\sqrt{\omega_j}} e^{-\delta_j t} (k_{2j+1} \cos \omega_{d_2} t + k_{2j+2} \sin \omega_{d_j} t), \quad j = 2, 3. \end{aligned} \tag{54}$$

Here $\bar{k}_1 = k_1 - k_3$ and $\bar{k}_2 = k_4 - k_2$.

Analogous to the classification of the orbits in the conservative system, we can also classify the orbits according to the following four categories according to the limiting behavior of X_1 when t approaches positive and negative infinity. The four categories of orbits are,

- (a) Orbits with $\bar{k}_1 = \bar{k}_2 = 0$ are focus-type asymptotic orbits (FAs).
- (b) Orbits with $\bar{k}_1 \bar{k}_2 = 0$ are SAs.
- (c) Orbits with $\bar{k}_1 \bar{k}_2 > 0$ are transit orbits.
- (d) Orbits with $\bar{k}_1 \bar{k}_2 < 0$ are NT orbits.

Although we have recognized four different categories of orbits, the transition criteria and the geometry that governs the transition are still not clear. As discussed above, the transition boundary is given by the stable invariant manifold of the index-1 saddle. Thus, to get the transition boundary, we only need to compute the initial conditions of a given energy we are interested in for the stable asymptotic orbits. According to the above discussion, such initial conditions are only determined by the saddle projection (q_1, p_1) given by,

$$q_1^0 = k_p p_1^0, \tag{55}$$

where $k_p = c_1 / (2\lambda + \sqrt{c_1^2 + 4\lambda^2})$. Thus, submitting the relation $Q_0 = C^{-1} X_0$ for the initial conditions in the eigenspace into the Hamiltonian normal form in (28), and applying the relation in (55), we can rewrite the Hamiltonian function in terms of the initial conditions in the phase space as,

$$\frac{(X_1^0)^2}{a_{X_1}^2} + \frac{(X_2^0)^2}{a_{X_2}^2} + \frac{(X_3^0)^2}{a_{X_3}^2} + \frac{(P_{X_2}^0)^2}{(\sqrt{2h})^2} + \frac{(P_{X_3}^0)^2}{(\sqrt{2h})^2} = 1, \tag{56}$$

where $a_{X_1} = \sqrt{\frac{h}{2k_p} \frac{1-k_p}{\lambda}}$, and,

$$P_{X_1}^0 = \frac{k_p + 1}{k_p - 1} \lambda X_1^0. \tag{57}$$

The form here is topologically a four-sphere, geometrically a four-dimensional ellipsoid in the six-dimensional phase space.

Due to the non-negativity of the last two terms in the left-hand side of (56) for the generalized momenta, we have following relation in the position space,

$$\frac{(X_1^0)^2}{a_{X_1}^2} + \frac{(X_2^0)^2}{a_{X_2}^2} + \frac{(X_3^0)^2}{a_{X_3}^2} \leq 1. \tag{58}$$

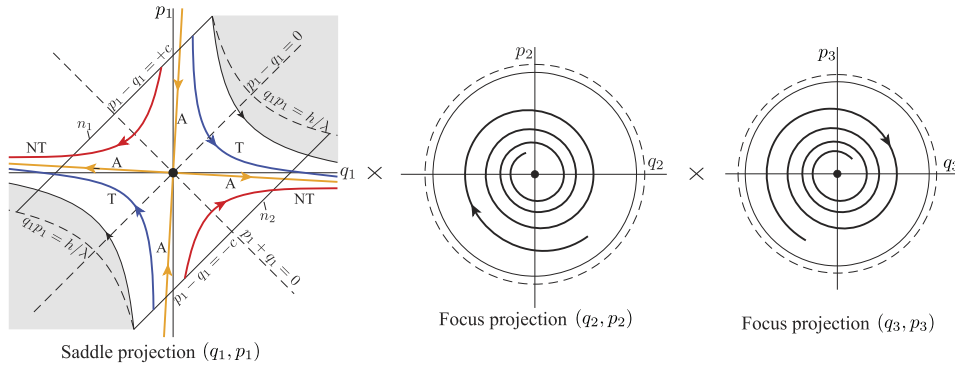


Figure 5. The flow in the equilibrium region of the dissipative system has the form saddle \times focus \times focus. The black dot in the saddle projection corresponds to the focus-type asymptotic orbits whose motions are only on the two focus projections. The four half open segments, defined by $q_1 = C_1 p_1 / (2\lambda \pm \sqrt{C_1^2 + 4\lambda^2})$, are the saddle-type A. The saddle-type asymptotic orbits in the dissipative system are titled clockwise compared to the asymptotic orbits in the conservative system. The stable and unstable asymptotic orbits are the stable and unstable invariant manifolds of the equilibrium point, respectively. Especially, the stable invariant manifold is the separatrix between transit orbits (T) and NT orbits. The trajectories on the boundary of the shaded region in the saddle projection is the fastest trajectories with initial conditions on the bounding sphere in the dissipative system, while the dashed trajectories are the fastest trajectories in the conservative system. The dash circles and solid circles on the two focus projections are the boundary of the initial conditions for the transit orbits in the conservative and dissipative systems, respectively.

The above relation defines a solid ellipsoid, which we refer to as the **ellipsoid of transition**. All the transit orbits have initial positions inside of the ellipsoid of transition. However, it only constrains the initial position for the asymptotic orbits. There is also a condition on the momenta or velocity. For an initial position inside the ellipsoid, from the definitions of R , θ , and ϕ in (45), and the relation (57), we can obtain the following relation for the momenta,

$$\theta = \arcsin \left(\frac{\lambda X_1^0 (k_p + 1)}{R(k_p - 1)} \right), \quad \phi \in [0, 2\pi]. \tag{59}$$

Thus, at position (X_1^0, X_2^0, X_3^0) inside of the ellipsoid of transition, (59) defines a cone to constrain the velocity of the asymptotic orbits. It is the cone of velocity for the dissipative system. Comparing the cone of velocity for the conservative system in (47) and the one for the dissipative system in (59), we can notice that the energy dissipation or the damping decreases the size of the cone at a given specific position inside of the ellipsoid, corresponding to an decreasing number of transit orbits as a fraction of all possible orbits.

Figure 6 gives the projections onto the position space around the equilibrium region. In contrast to the tube of transition that restricts the existence of the transit orbits in the conservative system, the geometric boundary for the possible existence of transit orbits in the dissipative system becomes an ellipsoid of transition. We conclude that the damping ‘closes’ the cylinder in the conservative system to form an ellipsoid in the dissipative system so that the farthest position for transit orbits are the end points of the ellipsoid. This means the region outside of the ellipsoid only allows NT orbits. However, it does not mean the orbits that start from the region inside of the ellipsoid can definitely escape to the other potential well since it only confines

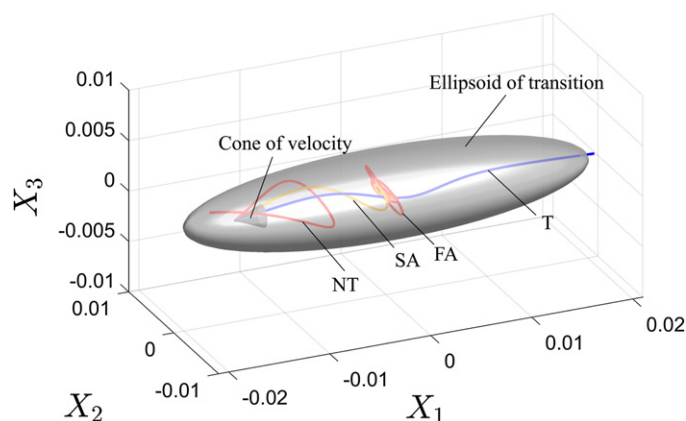


Figure 6. Ellipsoid of transition and cone of velocity defining the transition criteria in the dissipative system. Transit orbits must start from a position inside of the ellipsoid of transition and their initial velocity must be interior to the cone of velocity. If either criterion is not satisfied, the trajectories cannot escape from the potential well. In order to show the transition criteria, different types of orbits are given. Starting from a position inside of the ellipsoid of transition, the orbit with velocity interior to cone is transit orbit (T); the orbit with velocity outside of the cone is NT orbit; the orbit with velocity on the boundary of the cone is SA. Moreover, a FA moving on the plane at X_1 is also shown.

the possible position of transit orbits. A sufficient condition is necessary, given by the cone of velocity. For each position inside of the ellipsoid, there exists a cone of velocity giving the right direction of transit orbits. The orbits with velocity interior to the cone are transit orbits, while those with velocity outside the cone are NT orbits. The boundary of cone gives the velocity for the asymptotic orbits. At different position, the size of the cone is different. Especially, on the surface of the ellipsoid of transition, only one asymptotic orbits exists. Moreover, at the same point inside of the ellipsoid, the size of the cone of velocity for the dissipative system is smaller than that for the conservative system. Figure 6 also presents the ellipsoid of transition. At the same time, a cone of velocity at a specific position is also plotted. In order to show how the combination of the ellipsoid of transition and cone of velocity together defines the geometry and criteria of transition, four types of orbits are shown. We can notice that each orbit follows the established transition criteria.

5. Discussions and conclusions

In this paper, we study the escape dynamics in a three degree of freedom spring–mass system in the presence of energy dissipation. This study only focuses on the local dynamics around the neck region of the index-1 saddle. From the analytical derivation, we found that the type of the equilibrium point changes from a saddle \times center \times center in the conservative system to saddle \times focus \times focus in the dissipative system. Furthermore, we established the transition criteria and found the phase space structures governing the escape for both the conservative and dissipative systems.

We found that in the position space, the starting position of a transit orbit that escape from one potential well to another must be inside of the tube and the ellipsoid in the conservative and dissipative systems, respectively. Apart from the necessary condition for the initial position, an sufficient condition for the transit orbits is required for the velocity to ensure the transition.

At each point inside the position space structures, there exists a cone that gives the ‘right’ direction approaching to the neck region. All transit orbits should start with an initial velocity interior to the cone. Thus, the tube of transition in the conservative system and the ellipsoid of transition in the dissipative system associated with the respective cone of velocity together give the transition criteria. To have a more intuitive interpretation, we recall the position space geometry that governs the transition in the two degree of freedom systems [12, 13, 21]. In such systems, the strip in the conservative system and the ellipse in the dissipative system combined with wedges of velocity can determine the initial conditions of a prescribed energy for the transit orbits. Here we can correspond the strip and ellipse to the tube and ellipsoid, and correspond the wedge of velocity to the cone of velocity, in the two degree of freedom systems and three degree of freedom systems.

As for the six-dimensional phase space of the three degree of freedom system, the transition boundary of initial conditions of initial energy h , $\partial\mathcal{T}_h$, is a four-dimensional object for both the conservative and dissipative systems. However, for the conservative case, it is a hyper-cylinder of open topology $S^3 \times \mathbb{R}$, whereas for the dissipative case, is a hyper-ellipsoid of compact topology S^4 . We refer to them as the transition tube and transition ellipsoid, respectively. It was demonstrated that the transition tube and transition ellipsoid are the stable invariant manifolds of a set of bounded orbits (center manifold of the index-1 saddle of energy h) and of the index-1 saddle point itself, respectively. Since it is not possible to plot manifolds with dimension higher than three, here we leave the hyper-cylinder and hyper-ellipsoid in the form of mathematical formulae given in (43) and (56), respectively. The transition boundary defines the initial conditions for transit orbits of a certain initial energy h . The interior region of the hyper phase space structures gives the initial conditions for the transit orbits, while the exterior region gives the initial conditions for the NT orbits. Finally, it should be pointed out that we need to distinguish the difference of the tube and ellipsoid in the position space and the phase space. Although they are tubes and ellipsoid, their dimensions and functionalities are physically and mathematically different. The ones in the position space only restrict the positions of the transit orbits which need to be combined with the cone of velocity to determine the initial conditions together. However, the dynamical structures in the phase space can individually determine the initial conditions.

Although this paper investigated the escape dynamics in a three degree of freedom system taking into account the dissipative forces, only linear behaviors around the equilibrium region were presented. When a larger energy is input to the system, the nonlinear behaviors become prominent. The discussion of the full nonlinear system is left as future work to reveal the topological phase space structures that govern the transition in three and higher degrees of freedom system from a global perspective. When extending the linearized case to the nonlinear system, we can grow the local invariant manifold of the linearized system to the global invariant manifold. For the construction of the global invariant manifold, plenty of computational methods have been proposed [13, 23, 24, 28, 30, 57–61]. Among those algorithms, the idea of computing the global invariant manifold as a solution family of a suitable boundary-value problem (BVP) [13, 24] is a good candidate. During the application of continuation to obtain the solution families, the selection of the additional boundary condition apart from the ones approximated from the local invariant manifold is flexible, such as the time, arclength, or endpoint of the trajectories [24]. When implementing the BVP approach to compute higher dimensional invariant manifolds, we are faced with multi-parameter continuation which is complicated to be accomplished. Reference [13] proposed to reduce the number of continuation parameters by introducing an extra Poincaré section. This gives us an applicable inspiration to deal with the computation of the global invariant manifold in the three degree of freedom system as well. The current study on the linearized dynamics also presents a possible way, that is, to first find

the boundary of the topological tube and ellipsoid in the position space and then determine the cone of velocity at each admissible point. In summary, future work can reveal the geometry of escape dynamics in higher degree of freedom systems or develop corresponding computational algorithms for the global invariant manifolds, extending the local picture given here.

Acknowledgments

This work was partially supported in part by the National Science Foundation under awards 1922516 and 2027523 to SDR. We also thank two anonymous reviewers who gave several suggestions improving the quality of the paper.

Data availability statement

The data that support the findings of this study are available upon reasonable request from the authors.

ORCID iDs

Jun Zhong  <https://orcid.org/0000-0003-4147-3261>

Shane D Ross  <https://orcid.org/0000-0001-5523-2376>

References

- [1] Zhong J and Ross S D 2021 Differential correction and arc-length continuation applied to boundary value problems: examples based on snap-through of circular arches *Appl. Math. Modelling* **97** 81–95
- [2] Virgin L N, Guan Y and Plaut R H 2017 On the geometric conditions for multiple stable equilibria in clamped arches *Int. J. Non-Linear Mech.* **92** 8–14
- [3] Napoli G and Turzi S 2015 Snap buckling of a confined thin elastic sheet *Proc. R. Soc. A* **471** 20150444
- [4] Jin Q, Hu X, Ren Y and Jiang H 2020 On static and dynamic snap-throughs of the imperfect post-buckled FG-GRC sandwich beams *J. Sound Vib.* **489** 115684
- [5] Naik S and Ross S D 2017 Geometry of escaping dynamics in nonlinear ship motion *Commun. Nonlinear Sci. Numer. Simul.* **47** 48–70
- [6] Nayfeh A H, Mook D T and Marshall L R 1973 Nonlinear coupling of pitch and roll modes in ship motions *J. Hydronaut.* **7** 145–52
- [7] Uzer T, Jaffé C, Palacián J, Yanguas P and Wiggins S 2002 The geometry of reaction dynamics *Nonlinearity* **15** 957
- [8] Feldmaier M *et al* 2019 Invariant manifolds and rate constants in driven chemical reactions *J. Phys. Chem. B* **123** 2070–86
- [9] Jaffé C, Ross S D, Lo M W, Marsden J, Farrelly D and Uzer T 2002 Statistical theory of asteroid escape rates *Phys. Rev. Lett.* **89** 011101
- [10] Koon W S, Lo M W, Marsden J E and Ross S D 2000 Heteroclinic connections between periodic orbits and resonance transitions in celestial mechanics *Chaos* **10** 427–69
- [11] Wiggins S 1994 *Normally Hyperbolic Invariant Manifolds in Dynamical Systems* (New York: Springer)
- [12] Zhong J and Ross S D 2020 Geometry of escape and transition dynamics in the presence of dissipative and gyroscopic forces in two degree of freedom systems *Commun. Nonlinear Sci. Numer. Simul.* **82** 105033
- [13] Zhong J and Ross S D 2021 Global invariant manifolds delineating transition and escape dynamics in dissipative systems: an application to snap-through buckling *Nonlinear Dyn.* 1–29 Online first

- [14] Koon W S, Lo M W, Marsden J E and Ross S D 2011 *Dynamical Systems, the Three-Body Problem and Space Mission Design* (Pasadena, CA: Marsden Books)
- [15] Lyu W, Naik S and Wiggins S 2020 The role of depth and flatness of a potential energy surface in chemical reaction dynamics *Regul. Chaotic Dyn.* **25** 453–75
- [16] Katsanikas M, García-Garrido V J, Agaoglou M and Wiggins S 2020 Phase space analysis of the dynamics on a potential energy surface with an entrance channel and two potential wells *Phys. Rev. E* **102** 012215
- [17] Naik S and Wiggins S 2019 Finding normally hyperbolic invariant manifolds in two and three degrees of freedom with Hénon–Heiles-type potential *Phys. Rev. E* **100** 022204
- [18] García-Garrido V J and García-Luengo J 2021 Painting the phase space of dissipative systems with Lagrangian descriptors (arXiv:2103.14719)
- [19] Gabern F, Koon W S, Marsden J E, Ross S D and Yanao T 2006 Application of tube dynamics to non-statistical reaction processes *Few-Body Syst.* **38** 167–72
- [20] Onozaki K, Yoshimura H and Ross S D 2017 Tube dynamics and low energy Earth–Moon transfers in the four-body system *Adv. Space Res.* **60** 2117–32
- [21] Zhong J, Virgin L N and Ross S D 2018 A tube dynamics perspective governing stability transitions: an example based on snap-through buckling *Int. J. Mech. Sci.* **149** 413–28
- [22] Ross S D, BozorgMagham A E, Naik S and Virgin L N 2018 Experimental validation of phase space conduits of transition between potential wells *Phys. Rev. E* **98** 052214
- [23] Krauskopf B and Osinga H M 2003 Computing geodesic level sets on global (un)stable manifolds of vector fields *SIAM J. Appl. Dyn. Syst.* **2** 546–69
- [24] Krauskopf B, Osinga H M and Galán-Vioque J 2007 *Numerical Continuation Methods for Dynamical Systems* vol 2 (Berlin: Springer)
- [25] Kalies W D, Kepley S and Mireles James J D 2018 Analytic continuation of local (un)stable manifolds with rigorous computer assisted error bounds *SIAM J. Appl. Dyn. Syst.* **17** 157–202
- [26] García-Garrido V J, Agaoglou M and Wiggins S 2020 Exploring isomerization dynamics on a potential energy surface with an index-2 saddle using Lagrangian descriptors *Commun. Nonlinear Sci. Numer. Simul.* **89** 105331
- [27] García-Garrido V J, Naik S and Wiggins S 2020 Tilting and squeezing: phase space geometry of Hamiltonian saddle-node bifurcation and its influence on chemical reaction dynamics *Int. J. Bifurcation Chaos* **30** 2030008
- [28] Anderson R L, Easton R W and Lo M W 2017 Isolating blocks as computational tools in the circular restricted three-body problem *Physica D* **343** 38–50
- [29] Anderson R L, Easton R W and Lo M W 2020 Computing libration point isolated invariant sets using isolating blocks *Physica D* **405** 132361
- [30] Dellnitz M and Hohmann A 1997 A subdivision algorithm for the computation of unstable manifolds and global attractors *Numer. Math.* **75** 293–317
- [31] Dellnitz M and Hohmann A 1996 The computation of unstable manifolds using subdivision and continuation *Nonlinear Dynamical Systems and Chaos* (Berlin: Springer) pp 449–59
- [32] Krauskopf B, Osinga H M, Doedel E J, Henderson M E, Guckenheimer J, Vladimirovsky A, Dellnitz M and Junge O 2006 A survey of methods for computing (un) stable manifolds of vector fields *Modeling And Computations In Dynamical Systems: In Commemoration of the 100th Anniversary of the Birth of John von Neumann* (Singapore: World Scientific) pp 67–95
- [33] Branicki M and Wiggins S 2009 An adaptive method for computing invariant manifolds in non-autonomous, three-dimensional dynamical systems *Physica D* **238** 1625–57
- [34] Castelli R, Lessard J-P and Mireles James J D 2015 Parameterization of invariant manifolds for periodic orbits I: efficient numerics via the Floquet normal form *SIAM J. Appl. Dyn. Syst.* **14** 132–67
- [35] Haro À, Canadell M, Figueras J-L, Luque A and Mondelo J M 2016 *The Parameterization Method for Invariant Manifolds: From Rigorous Results to Effective Computations* vol 195 (Berlin: Springer)
- [36] Kumar B, Anderson R L and de la Llave R 2021 Rapid and accurate computation of whiskered tori and their manifolds near resonances in periodically perturbed planar circular restricted three-body problems (arXiv:2105.11100)
- [37] Krajňák V, García-Garrido V J and Wiggins S 2021 Reactive islands for three degrees-of-freedom Hamiltonian systems *Physica D* **425** 132976
- [38] Gómez G, Koon W S, Lo M W, Marsden J E, Masdemont J and Ross S D 2004 Connecting orbits and invariant manifolds in the spatial restricted three-body problem *Nonlinearity* **17** 1571–606

- [39] Conley C C 1968 Low energy transit orbits in the restricted three-body problems *SIAM J. Appl. Math.* **16** 732–46
- [40] De Leon N and Marston C C 1989 Order in chaos and the dynamics and kinetics of unimolecular conformational isomerization *J. Chem. Phys.* **91** 3405–25
- [41] Marston C C and De Leon N 1989 Reactive islands as essential mediators of unimolecular conformational isomerization: a dynamical study of three-phospholene *J. Chem. Phys.* **91** 3392–404
- [42] de Almeida A M O, De Leon N, Mehta M A and Marston C C 1990 Geometry and dynamics of stable and unstable cylinders in Hamiltonian systems *Physica D* **46** 265–85
- [43] Meiss J D 2007 *Differential Dynamical Systems* vol 14 (Philadelphia, PA: SIAM)
- [44] Wiggins S 2003 *Introduction to Applied Nonlinear Dynamical Systems and Chaos* vol 2 (Berlin: Springer)
- [45] Perko L 2013 *Differential Equations and Dynamical Systems* vol 7 (Berlin: Springer)
- [46] Moser J 1958 On the generalization of a theorem of A Liapounoff *Commun. Pure Appl. Math.* **11** 257–71
- [47] Moser J 1973 *Stable and Random Motions in Dynamical Systems with Special Emphasis on Celestial Mechanics* (Princeton, NJ: Princeton University Press)
- [48] Greenwood D T 2006 *Advanced Dynamics* (Cambridge: Cambridge University Press)
- [49] Marsden J E and Ratiu T S 1999 *Introduction to Mechanics and Symmetry (Texts in Applied Mathematics Volume 17)* (New York: Springer)
- [50] Levi M 2014 *Classical Mechanics with Calculus of Variations and Optimal Control: An Intuitive Introduction* vol 69 (Providence, RI: American Mathematical Society)
- [51] Hartman P 1964 *Ordinary Differential Equations* (New York: Wiley)
- [52] Jorba A and Masdemont J 1999 Dynamics in the center manifold of the collinear points of the restricted three body problem *Physica D* **132** 189–213
- [53] Wiggins S, Wiesenfeld L, Jaffé C and Uzer T 2001 Impenetrable barriers in phase-space *Phys. Rev. Lett.* **86** 5478
- [54] Szebehely V 1967 *Theory of Orbits: The Restricted Problem of Three Bodies* (New York: Academic)
- [55] De Leon N and Ling S 1994 Simplification of the transition state concept in reactive island theory: application to the HCN=CNH isomerization *J. Chem. Phys.* **101** 4790–802
- [56] Collins P, Ezra G S and Wiggins S 2012 Isomerization dynamics of a buckled nanobeam *Phys. Rev. E* **86** 056218
- [57] Madrid J A J and Mancho A M 2009 Distinguished trajectories in time dependent vector fields *Chaos* **19** 013111
- [58] Krauskopf B, Osinga H M, Doedel E J, Henderson M E, Guckenheimer J, Vladimírsky A, Dellnitz M and Junge O 2005 A survey of methods for computing (un)stable manifolds of vector fields *Int. J. Bifurcation Chaos* **15** 763–91
- [59] Kepley S and James J M 2019 Homoclinic dynamics in a restricted four-body problem: transverse connections for the saddle-focus equilibrium solution set *Celest. Mech. Dyn. Astron.* **131** 1–55
- [60] Calleja R, Celletti A, Gimeno J and de la Llave R 2021 Efficient and accurate KAM tori construction for the dissipative spin-orbit problem using a map reduction (arXiv:2106.09175)
- [61] Calleja R, Celletti A, Gimeno J and de la Llave R 2021 KAM quasi-periodic tori for the dissipative spin-orbit problem (arXiv:2107.02853)